

P50



P50 - A high-tech ultra-portable ultrasound scanner with only 160g light weight, Convenient for hand-carry , As doctor's visual stethoscope , doctors can do ultrasound anytime, anywhere .

Specification

Net weight	About 160g
Size	150mm*40mm *25mm
Battery lifetime	4 hours
Platform	Android, Windows, iOS
Connection Type	WiFi & USB
Supporting devices	tablet or smart phone, Windows PC, etc.
Probe	Cardiac&ABD , convex, linear, micro-convex, transvaginal, Linear rectal
Modes	B, BM, 2B, THI, Color , Power , PW
Language	Multiple languages supported
Zoom	Max 10 times
Other function	Patient information Management DICOM 3.0



WiFi & USB connection Supporting Android/iOS/Windows systems, Easy to use , convenient to scan quickly anytime, anywhere.

Technical characteristics



The Lowest power consumption 3W , and longest battery life 4 hours ,to break the technical barriers and reduce the power consumption of the machine, which not only prolongs the battery life, but also avoids the problem of overheating of the fuselage.

Youkey's proprietary probe replaceable technology enables one host to switch the probe to meet different ultrasound examination .More cost effective and convenient to meet the needs of different clinical applications .



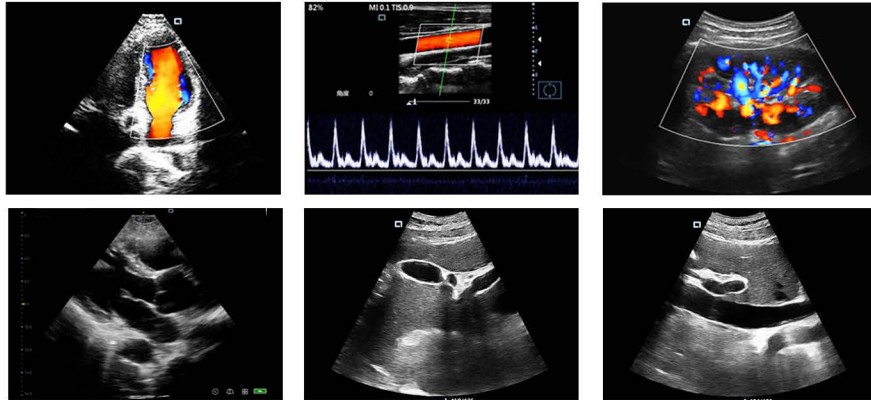
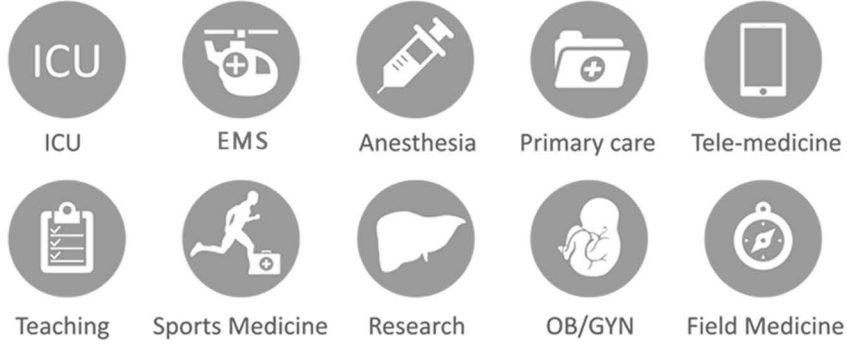
Abdomen scan Cardiac scan



Specially customized dual use probe - Cardiac&ABD probe can be used for both routine abdominal exams and Cardiac exams .

Probe image	Probe type	Model	Freq (MHZ)	Bandwidth (MHZ)	Radius/ Footprint	Application
	Convex& Cardiac	C5-2Fs	3.5	2-5	R50	Emergency Cardiac, Abdomen, OB/GYN, Urology, Lung
	Convex	C5-2Ks	3.5	2.5-5	R60	Abdomen, OB/GYN, Urology, Lung
	Linear	L11-4Ks	7.5	6-11	L40	Vascular, Small Parts, Breast, MSK, Nerve, Anesthesia
	Small Linear	L11-4Gs	8.0	6-11	L25	Nerve, Anesthesia, Vascular, Small Parts, Breast, MSK
	Micro-convex	C8-5Ks	6.5	5-8	R15	Neonatal Abdominal, Small Parts, Neonatal Cardiac
	Transvaginal	E10-4Ks	6.5	5-8.5	R10	Obstetrics/Gynecology, Urology, IVF, Pelvic
	Linear Rectal	L10-4Vs	6	5-10	L64	Large animal reproduction

Application



P50



R&D Center ADD :2nd Floor, Dingxin Industry park, Jiayuan Road,East Lake Development Zone, Wuhan 430074, Hubei Province, China .
 Factory ADD : 6th Floor, B1 Building, Haotian Technology Park, Nanhai District, Foshan City, Guangdong Province, China

Tel : +86 27 88797167
 Email: info@youkeymedical.com
 Web : www.youkeymedical.com



contacto@grupoholt.com.mx
 Tel. (55) 4631 2100
 Lago Andrómaco No. 40 Int. B, Col. Granada, C.P.11529, México, D.F.

